

An aerial, high-angle photograph of a boat's wake in the ocean. The water is a deep, dark blue, and the wake is a turbulent, white, frothy trail that curves across the frame from the top center towards the bottom. The texture of the water is highly detailed, showing individual ripples and the churning of the wake.

MYL.IUS

Y A C H T S

60' FD

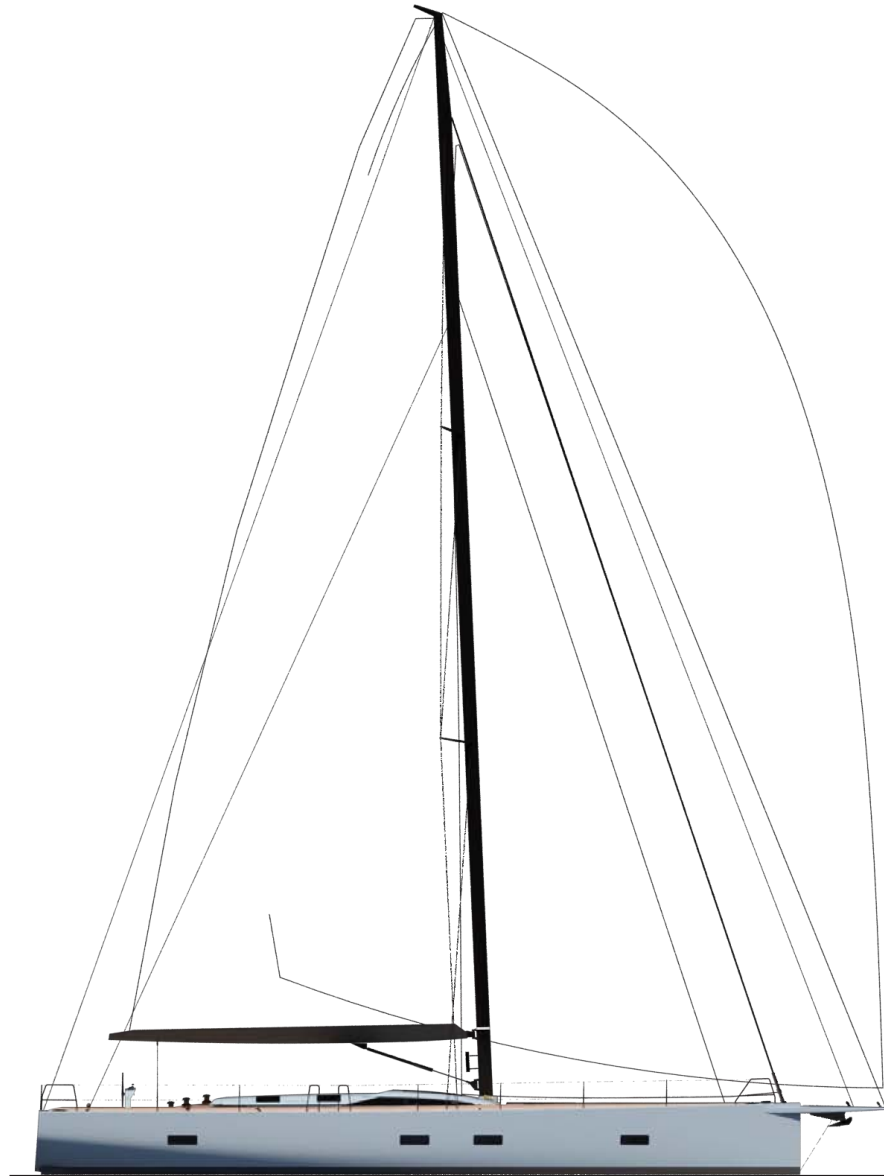






Mylius 60' FD

Sail plan & Technical Data



Dati principali

Lunghezza fuori tutto	Lenght overall	18,47 m	60 ft 7 in
LFT con delfiniera	Lenght with bowsprit	20,47 m	67 ft 2 in
Lunghezza al galleggiamento	Lenght waterline	16,91 m	55 ft 6 in
Baglio massimo	Max beam	5,19 m	20 ft 0 in
Pescaggio standard	Draft fixed keel	3,00 m	9 ft 10 in
Dislocamento (light)	DSPL (light)	17.400 kg	38.360 lb.
Zavorra (approx.)	Ballast (approx.)	6.700 kg	14.771 lb.
CE - Approval			Category "A" Ocean

Key data

Interni

Letti	Accomodations		6 + 1 crew
Bagni	Heads		3
Serbatoio d'acqua	Water tank	520 l	114 UK gal.
Serbatoio gasolio	Diesel tank	390 l	85 UK gal.
Aqua calda (boiler)	Hot water (boiler)	40 l	8,80 UK gal.

Interiors

Piano velico

Superficie velica (bolina)	Sail area upwind	198 mq	2.131 sq. ft.
Superficie velica (portanti)	Sail area downwind	420 mq	4.520 sq. ft.
Albero	Mast		Carbon Standard Modulus
Boma	Boom		Carbon V-boom
Sartieme	Standing rigging		Nitronic 50

Sail plan

Impianti

Motore	Engine	Yanmar YANMAR 4JH110 81 kW
Generatore	Generator	Mase 6.5 kW Variable speed

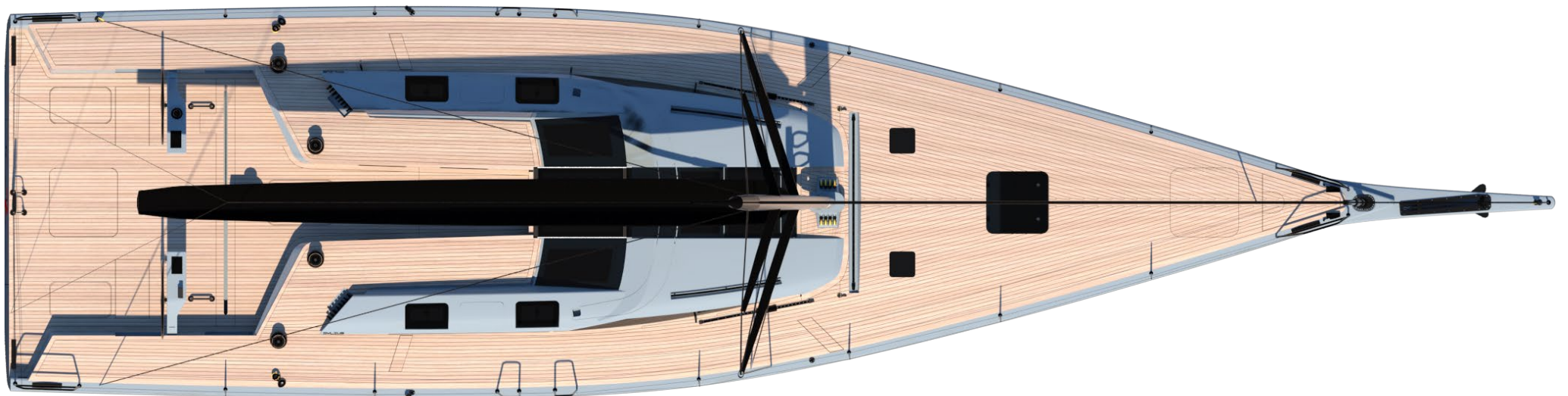
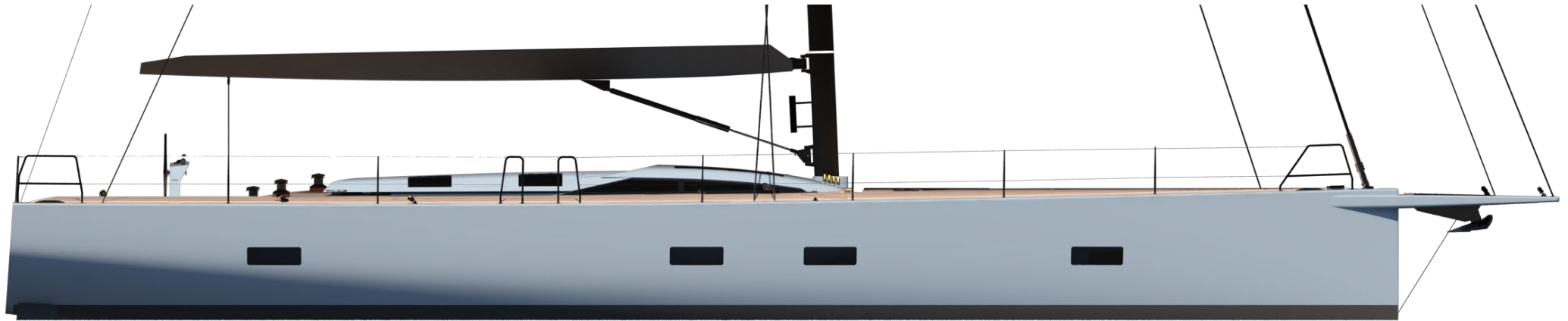
Systems

Design

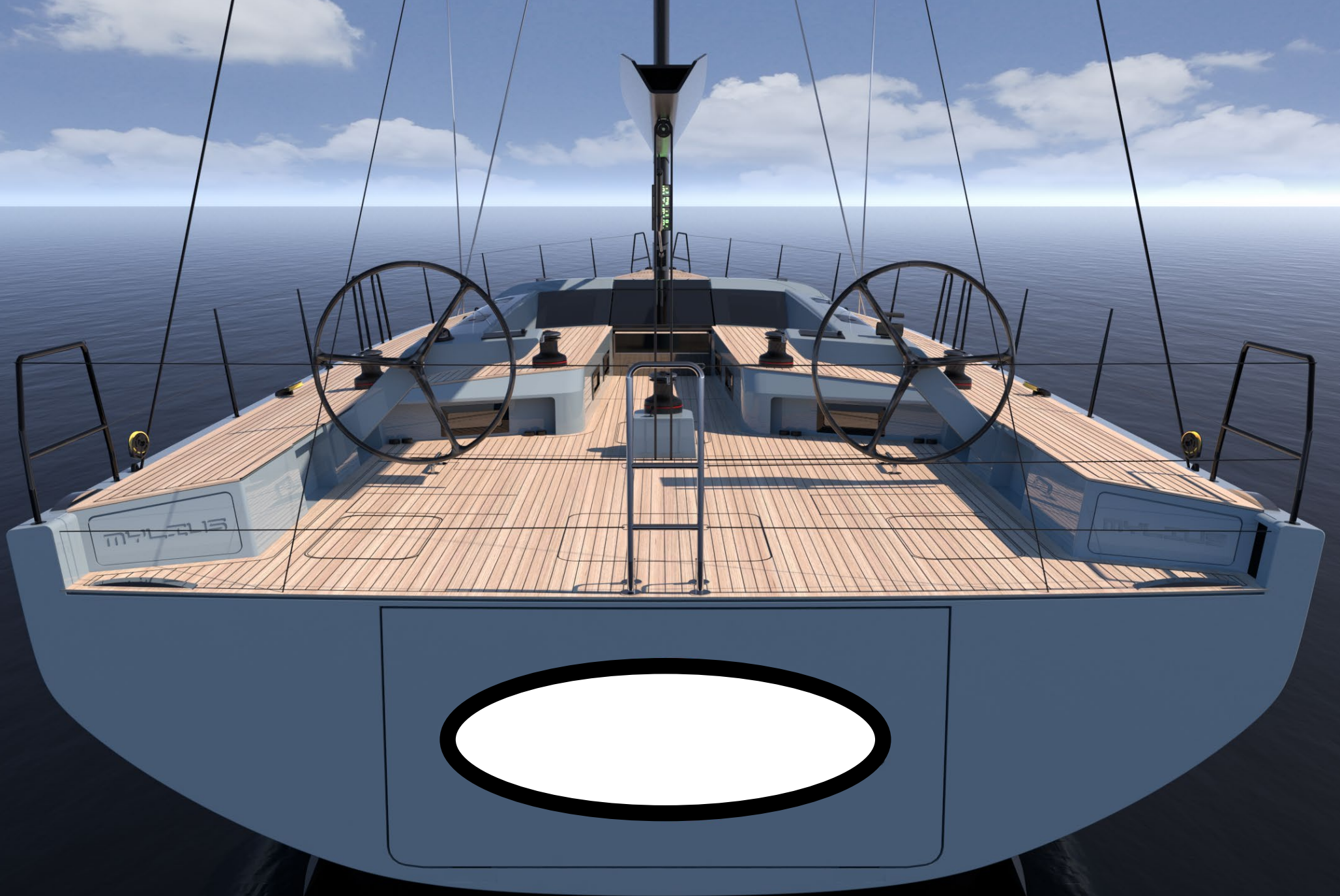
Alberto Simeone | Mylius

Mylius 60' FD

Deck layout

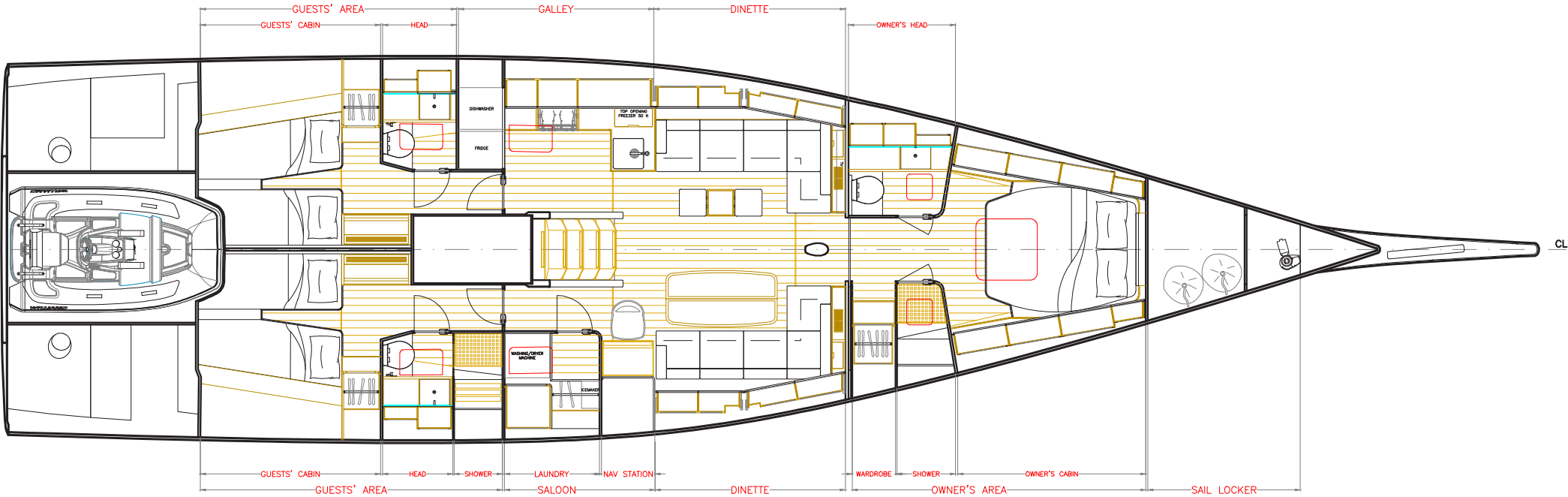
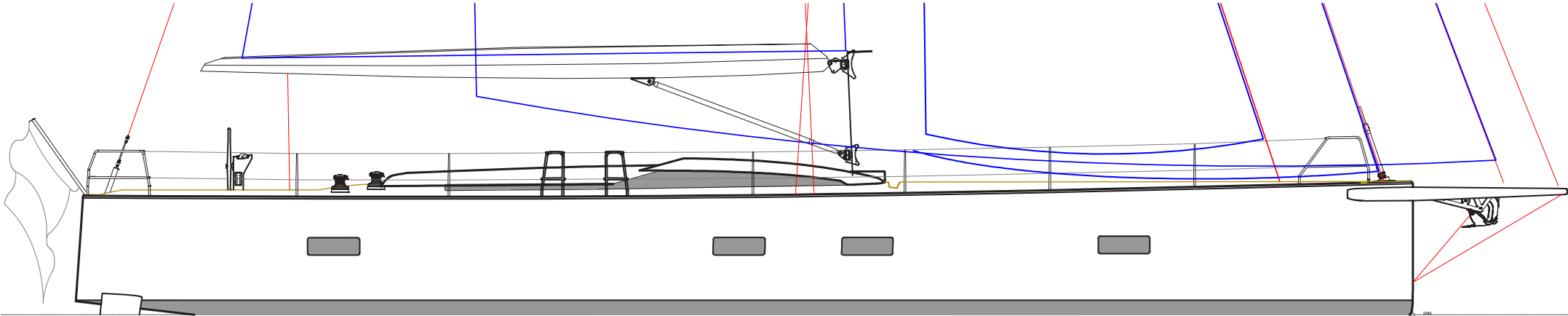






Mylius 60' FD

Interior layout





Interior rendering | Dinette looking forward | Teak veneered and carbon look details



Interior rendering | Dinette looking forward | Teak veneered and carbon look details



Interior rendering | Dinette looking from starboard side | Teak veneered and carbon look details



Interior rendering | Dinette looking from starboard side | Teak veneered and carbon look details



Interior rendering | Nav station | Teak veneered and carbon look details



Interior rendering | Dinette looking aft | Teak veneered and carbon look details





Interior rendering | Owner's cabin looking forward | Teak veneered and carbon look details



Interior rendering | Owner's cabin looking aft | Teak veneered and carbon look details



www.mylus.it

Mylus Yacht srl

Via XXV Aprile, 19 - 29027 Podenzano (PC) Italy

Tel. +39.0523.538011 - Fax +39.0523.556145

mylus@mylus.it

